

Quick Installation Guide

S7 PRO ELITE



VIDEO DOOR PHONE

What's in the Box



1 x S7 pro elite



1 x Quick installation guide



1 x S7 rain cover



1 x Drilling template



1 x Hex key



1 x Anti-tamper screw



4 x Anchors



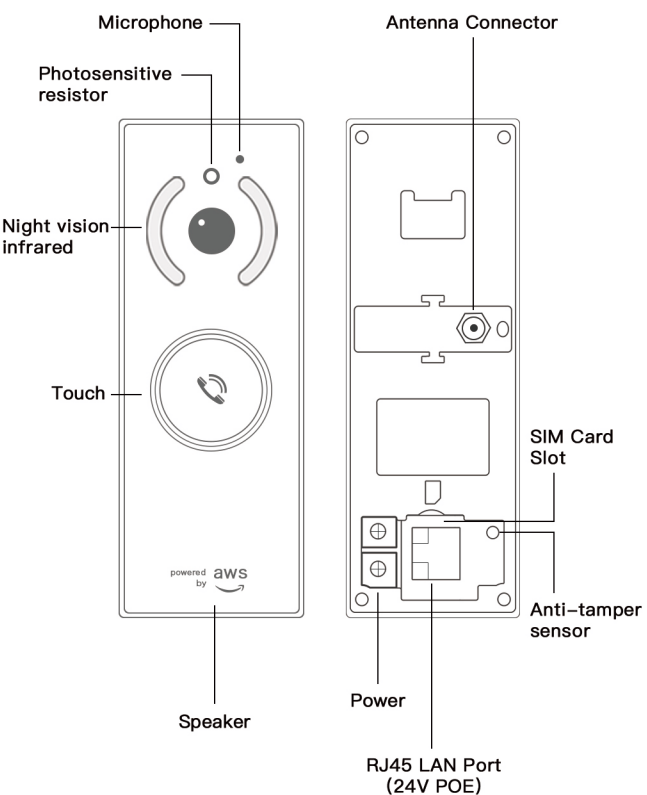
4 x Screws



2 x Extended wires



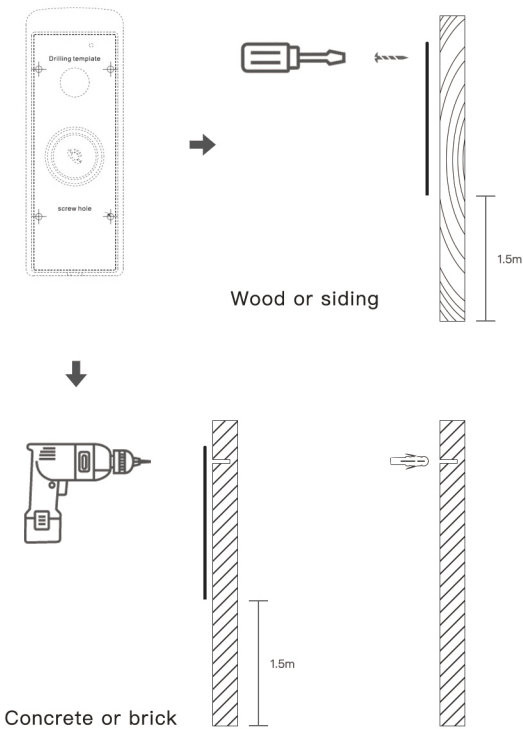
1 x Wire connector



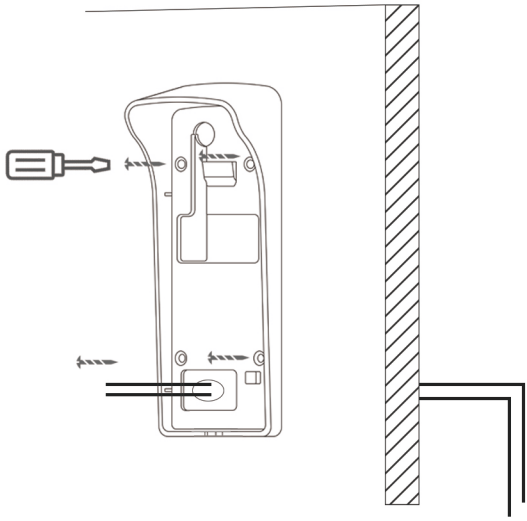
Read Before Installation

- S7 PRO ELITE can either be powered by existing doorbell wires or 24V PoE adapter (not included in package).
- Keep the door phone and all accessories out of reach of children and pets.
- S7 PRO ELITE is a wired door phone that requires the power voltage range between 12 and 24VAC or 12 and 24VDC ($\geq 1000\text{mA}$).
- Please note that S7 PRO ELITE is only compatible with the S7 Chime. The indoor chime is not included in the package.
- Please try to avoid placing door phone close to the metal frame or radio interference source.
- The product can only be used at a proper temperature and humidity level:
Operating temperature: $-20^{\circ}\text{C} \sim 40^{\circ}\text{C}$
Operating humidity: $0 \sim 90\%$
- Please do not expose the camera lens to direct sunlight.

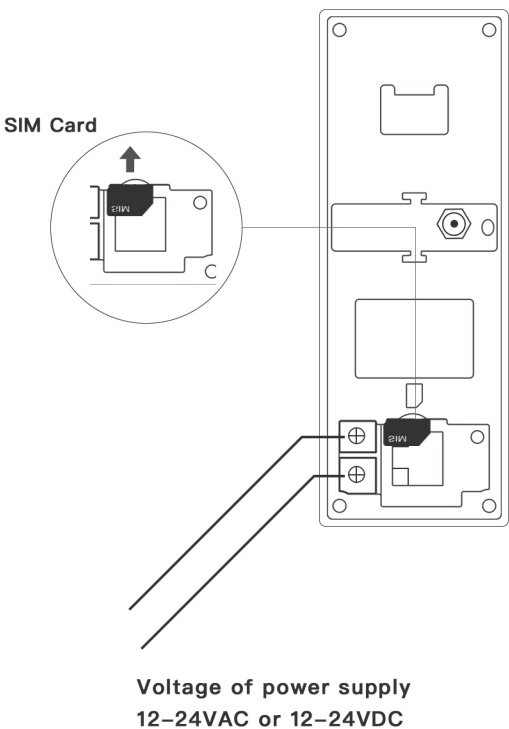
Step 1:



Step 2:



Step 3:



Step 4:

